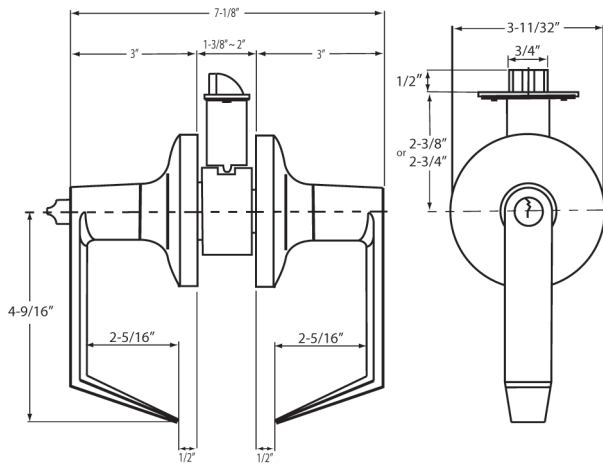


# E SERIES - CT STYLE GRADE 2 CYLINDRICAL LEVER



## DIMENSIONS



## STANDARD SPECIFICATIONS



<b>Door Prep</b>	Cross bore: 2-1/8" Edge bore: 1" Latch face: 2-3/4": 1-1/8" x 2-1/4" 2-3/8": 1" x 2-1/4"	<b>Latches</b>	Entrance: 2-3/4" (E9070T) standard. 2-3/8" (E9060T) optional Pass/Priv: 2-3/4" (E9073T) standard. 2-3/8" (E9063T) optional Faceplate: 2-3/4": 1-1/8" x 2-1/4". 2-3/8": 1" x 2-1/4" Sq. Corner Bolt: 1/2" Stainless Steel throw. Meets 3-Hr. Fire Rating
<b>Backset</b>	2-3/4" UL Latch standard, 2-3/8" optional	<b>Strikes</b>	4-7/8" ANSI Strike standard (9109)
<b>Door Thickness</b>	1-3/8" ~ 2". Adjustable mounting plate	<b>Door Handing</b>	Not Required
<b>Cylinder</b>	SC4 6-pin standard, KW1 5-pin optional Entries packed KA2	<b>Interchangeable Core</b>	Optional small-format 6-pin or 7-pin available
<b>ANSI &amp; Federal Standards</b>	<ul style="list-style-type: none"> <li>Meets &amp; exceeds requirements of BHMA/ANSI A156.2 Series 4000, GR2, 400,000 Cycles.</li> <li>Meets FF-H-106C Federal Standard.</li> </ul>	<b>Product Features</b>	<ul style="list-style-type: none"> <li>Independent Torsion Spring</li> <li>Concealed Mounting Screws</li> <li>Clutch Function</li> <li>Removable Through Bolts</li> <li>Anti-Friction Latch Retractor</li> <li>Panic Proof - Push/Turn</li> </ul>

## ITEM DETAILS

Model	Function	WT/LB	CTN QTY	EV Series		EC Series - IC Core (Core not included)	
				US26D Dull Chrome	US10B Oil Rubbed Bronze	US26D IC Core Dull Chrome	US10B IC Core Oil Rubbed Bronze
500-E	Entrance	29 Lbs	6 Pcs	Item No. 3V5002	3V5000	3V5102	3V5100
504-E	Storeroom	29 Lbs	6 Pcs	Item No. 3V5042	3V5040	3V5142	3V5140
509-E	Classroom	29 Lbs	6 Pcs	Item No. 3V5092	3V5090	3V5192	3V5190
501-E	Passage	26 Lbs	6 Pcs	Item No. 3V5012	3V5010	—	—
502-E	Privacy	28 Lbs	6 Pcs	Item No. 3V5022	3V5020	—	—
515-E	Dummy	18 Lbs	12 Pcs	Item No. 3V5052	3V5050	—	—

Core not Included.

